

DESCRIPTION:

LOT 77, "IBIS GOLF AND COUNTRY CLUB PLAT NO. 33", ACCORDING TO THE PLAT THEREOF, AS RECORDED IN PLAT BOOK 98, PAGES 120 THROUGH 125, OF THE PUBLIC RECORDS OF PALM BEACH COUNTY, FLORIDA, CONTAINING 11,539 SQUARE FEET OR 0.2649 ACRES MORE OR LESS. SAID LANDS SITUATE IN THE CITY OF WEST PALM BEACH, PALM BEACH COUNTY, FLORIDA. SUBJECT TO EASEMENTS, RESTRICTIONS, RESERVATIONS, COVENANTS, AND RIGHTS-OF-WAY OF RECORD.

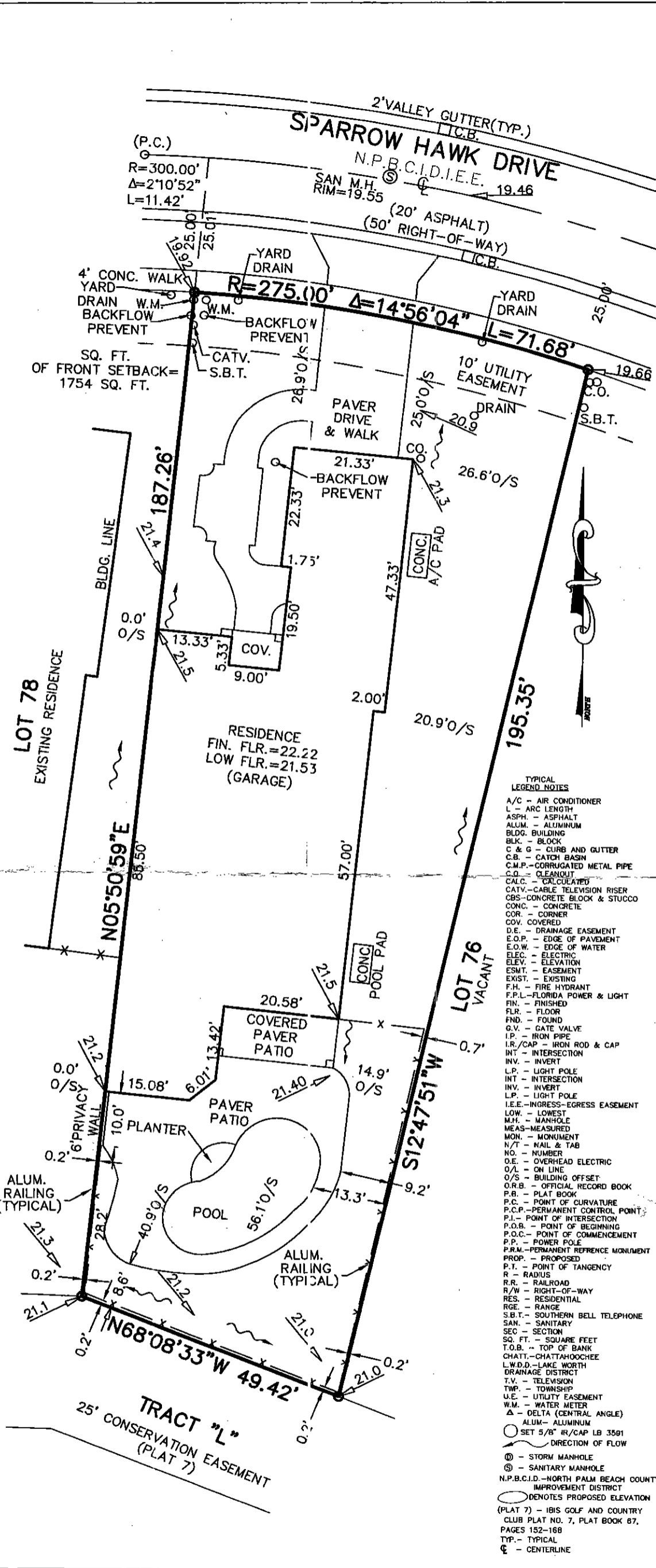
NOTES:

REPRODUCTIONS OF THIS SKETCH ARE NOT VALID UNLESS SEALED WITH AN EMBOSSED SURVEYOR'S SEAL. LANDS SHOWN HEREON ARE NOT DEDICATED FOR RIGHTS-OF-WAY, EASEMENTS, OWNERSHIP, OR OTHER INSTRUMENTS OF RECORD. BEARINGS SHOWN HEREON ARE RELATIVE TO ASSUMED DATUM BASED ON THE WEST CORNER OF LOT 77, "IBIS GOLF AND COUNTRY CLUB PLAT NO. 33", AS RECORDED IN PLAT BOOK 98, PAGES 120 THROUGH 125, BEARING N55°50'59"E. THE "LAND DESCRIPTION" HEREON IS IN ACCORD WITH THE INSTRUMENT OF RECORD. ELEVATIONS SHOWN HEREON ARE RELATIVE TO THE NATIONAL GEODETIC VERTICAL DATUM OF 1929. FLOOD ZONE "B"; COMMUNITY PANEL NO. 0192 0050 B; DATE: OCTOBER 15, 1982.

CERTIFICATE:

I HEREBY CERTIFY THAT THE ATTACHED BOUNDARY SURVEY OF THE HEREON DESCRIBED PROPERTY IS TRUE AND CORRECT TO THE BEST OF MY KNOWLEDGE AND BELIEF AS PREPARED UNDER MY DIRECTION ON JUNE 20, 2007. I FURTHER CERTIFY THAT THIS SKETCH OF DESCRIPTION MEETS THE MINIMUM TECHNICAL STANDARDS SET FORTH IN CHAPTER 61G17-6 ADOPTED BY THE FLORIDA BOARD OF SURVEYORS AND MAPPERS PURSUANT TO FLORIDA STATUTES 471.027.

DAVID P. LINDSEY
REGISTERED LAND
SURVEYOR-NO. 5005
STATE OF FLORIDA
L.B. 3591



- TYPICAL LEGEND NOTES**
- A/C - AIR CONDITIONER
 - ASPH - ASPHALT
 - ALUM - ALUMINUM
 - BLDG - BUILDING
 - BLK - BLOCK
 - C & G - CURB AND GUTTER
 - C.B. - CATCH BASIN
 - C.M.P. - CORRUGATED METAL PIPE
 - C.O. - CLEANOUT
 - CALC. - CALCULATED
 - CATV - CABLE TELEVISION RISER
 - CBS - CONCRETE BLOCK & STUCCO
 - CONC. - CONCRETE
 - COR. - CORNER
 - COV. - COVERED
 - D.E. - DRAINAGE EASEMENT
 - E.O.P. - EDGE OF PAVEMENT
 - E.O.W. - EDGE OF WATER
 - ELEC. - ELECTRIC
 - ELEV. - ELEVATION
 - ESMT. - EASEMENT
 - EXIST. - EXISTING
 - F.H. - FIRE HYDRANT
 - F.P.L. - FLORIDA POWER & LIGHT
 - FIN. - FINISHED
 - FLR. - FLOOR
 - FND. - FOUND
 - G.V. - GATE VALVE
 - I.P. - IRON PIPE
 - I.R./CAP - IRON ROD & CAP
 - INT - INTERSECTION
 - INV. - INVERT
 - L.P. - LIGHT POLE
 - INT - INTERSECTION
 - INV. - INVERT
 - L.P. - LIGHT POLE
 - I.E.E. - INGRESS-EGRESS EASEMENT
 - LOW. - LOWEST
 - M.H. - MANHOLE
 - MEAS. - MEASURED
 - MON. - MONUMENT
 - N/T - NAIL & TAB
 - NO. - NUMBER
 - O.E. - OVERHEAD ELECTRIC
 - O/L - ON LINE
 - O/S - BUILDING OFFSET
 - O.R.B. - OFFICIAL RECORD BOOK
 - P.B. - PLAT BOOK
 - P.C. - POINT OF CURVATURE
 - P.C.P. - PERMANENT CONTROL POINT
 - P.I. - POINT OF INTERSECTION
 - P.O.B. - POINT OF BEGINNING
 - P.O.C. - POINT OF COMMENCEMENT
 - P.P. - POWER POLE
 - P.R.M. - PERMANENT REFERENCE MONUMENT
 - PROP. - PROPOSED
 - P.T. - POINT OF TANGENCY
 - R - RADIUS
 - R.R. - RAILROAD
 - R/W - RIGHT-OF-WAY
 - RES. - RESIDENTIAL
 - RGE. - RANGE
 - S.B.T. - SOUTHERN BELL TELEPHONE
 - SAN. - SANITARY
 - SEC. - SECTION
 - SQ. FT. - SQUARE FEET
 - T.O.B. - TOP OF BANK
 - CHATT. - CHATTAHOOCHEE
 - L.W.D. - LAKE WORTH DRAINAGE DISTRICT
 - T.V. - TELEVISION
 - TWP. - TOWNSHIP
 - U.E. - UTILITY EASEMENT
 - W.M. - WATER METER
 - Δ - DELTA (CENTRAL ANGLE)
 - ALUM - ALUMINUM
 - SET 5/8" R/CAP LB 3591
 - DIRECTION OF FLOW
 - ⊙ - STORM MANHOLE
 - ⊙ - SANITARY MANHOLE
 - N.P.B.C.I.D. - NORTH PALM BEACH COUNTY IMPROVEMENT DISTRICT
 - DENOTES PROPOSED ELEVATION
 - (PLAT 7) - IBIS GOLF AND COUNTRY CLUB PLAT NO. 7, PLAT BOOK 87, PAGES 152-168
 - TYP. - TYPICAL
 - ⊕ - CENTERLINE

CAULFIELD & WHEELER, INC.
CIVIL ENGINEERING
LAND SURVEYING
7301A W. PALMETTO PARK ROAD - SUITE 100A
BOCA RATON, FLORIDA 33433
PHONE (561) 392-1991 / FAX (561)-750-1452

FINAL SURVEY	7/10/08	DBF
FORMBOARD SURVEY	1/10/08	GAT
ADDED FRONT SETBACK SQ. FT.	12/14/07	HK
PER REVISED REQUIREMENTS	10/19/07	CE
PERMIT SKETCH	6/20/07	CE
REVISIONS	DATE	BY
FILE NAME	PROJECTS/2985/DRAWING/SURVEY/PERMITS/4680L77	

DATE	6/20/07
DRAWN BY	CE
F.B./ PG.	N/A
SCALE	1"=20'
JOB NO.	4680

IBIS GOLF AND COUNTRY CLUB PLAT NO. 33
BOUNDARY SURVEY LOT 77